

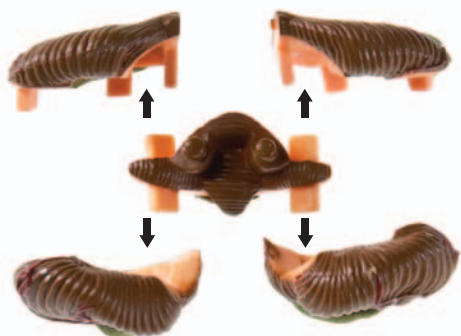
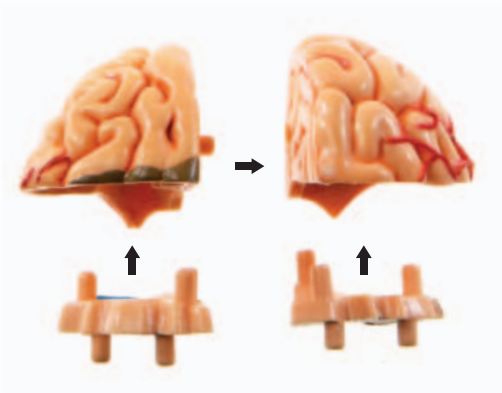
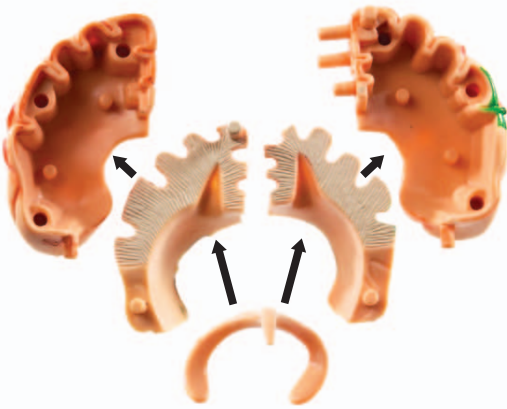
Human Anatomy Model

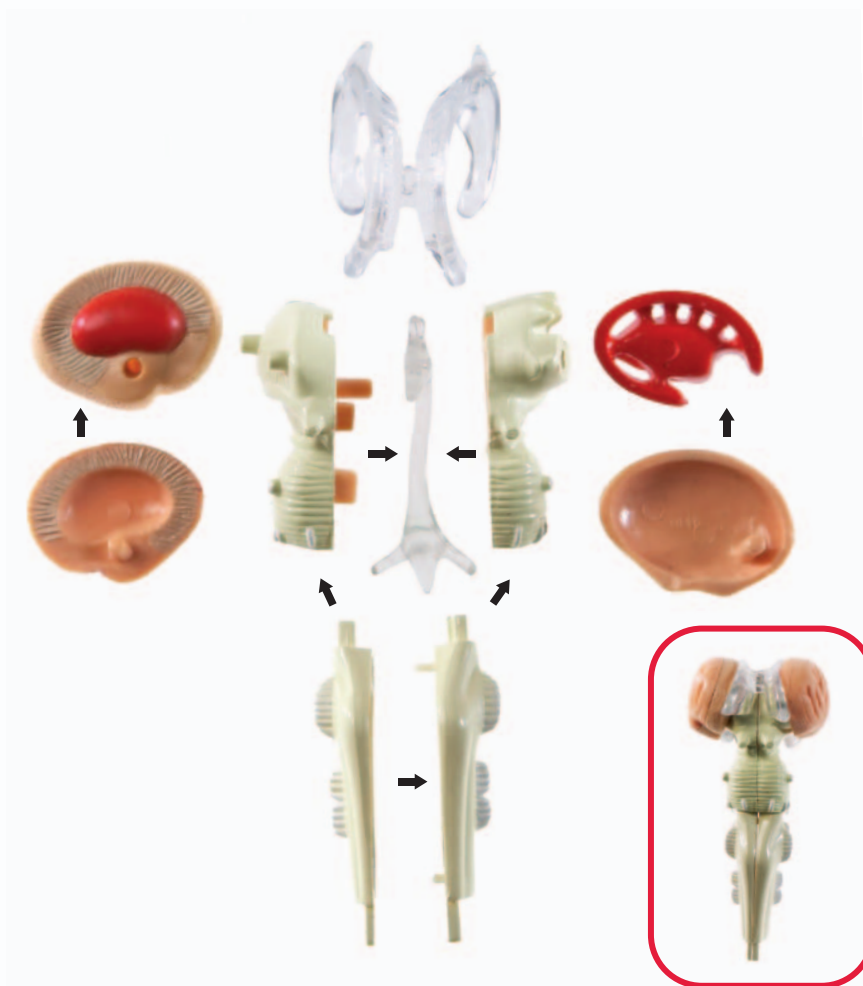
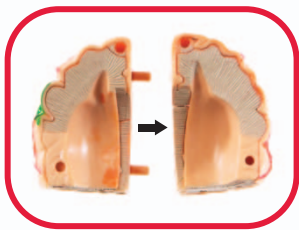
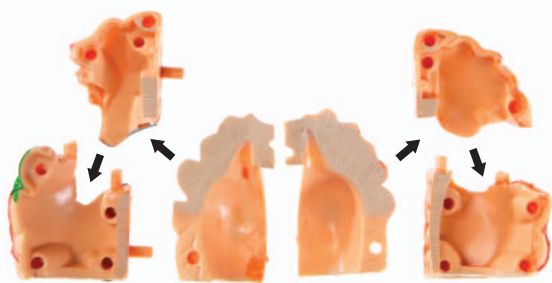
Assembly Guide

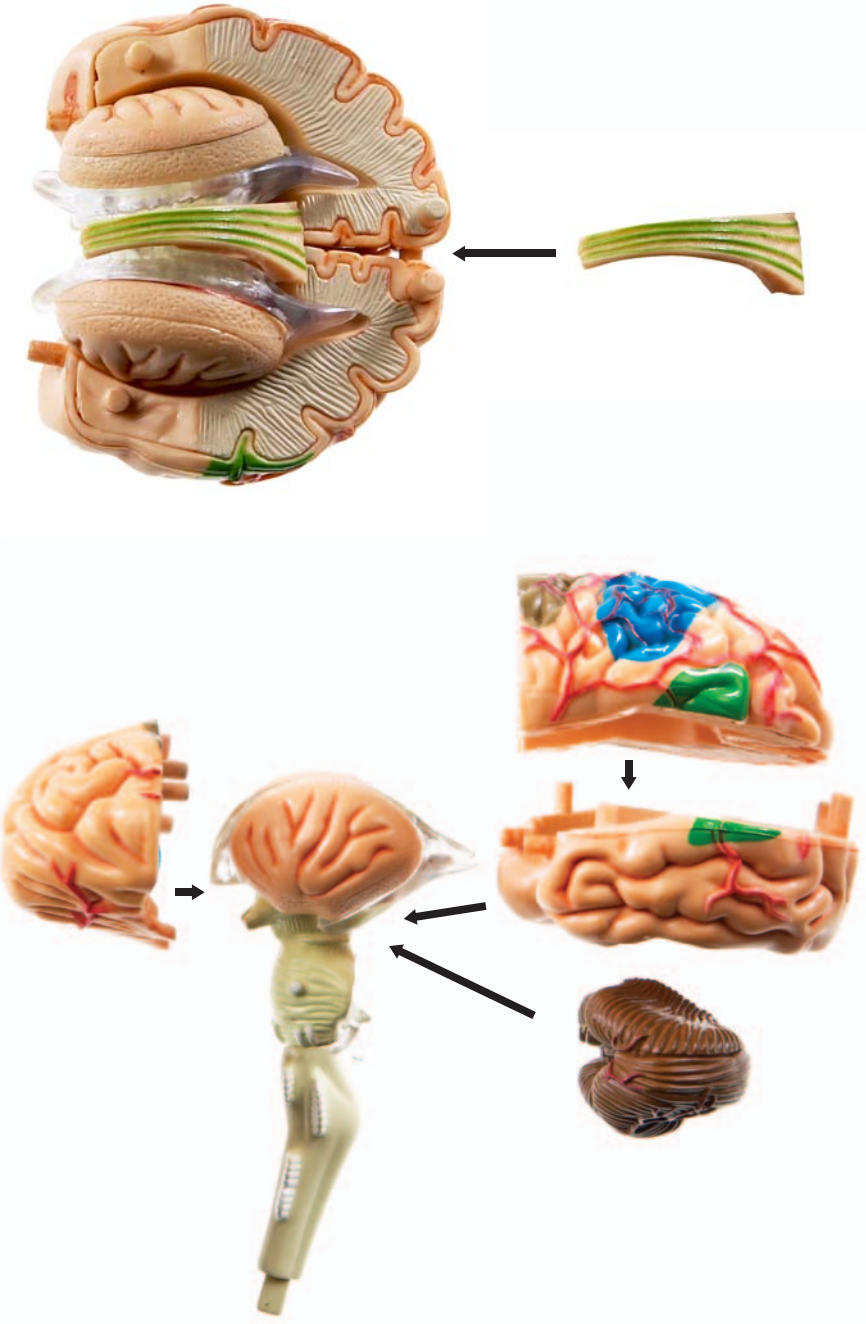
The brain anatomy model is a set of thirty-one pieces that connect to form a human brain. The brain's major parts are displayed: cerebellum, frontal, parietal, temporal, and occipital lobes, corpus callosum, brain stem, hippocampus, ventricles, insula, corpus striatum, internal capsule, and lentiform nucleus.



Brain











cerebellum coordinates body movement and maintains the body's balance and equilibrium



frontal lobe controls many functions including movement, memory, language, social behavior, problem solving, decision making, emotion, and personality



parietal lobe interprets sensory information of touch, pressure, temperature, and pain; involved with language comprehension



temporal lobe controls auditory perception, speech, language comprehension, and visual recognition



occipital lobe processes visual information and controls visual perception, including color recognition, sending the information to the parietal and temporal lobes



corpus callosum connects and communicates between the left and right sides of the brain



brain stem contains the medulla oblongata, pons, and midbrain; connects the spinal cord and controls some involuntary movements such as breathing and heart rate



hippocampus the part of the limbic system that involves memory retention and spatial orientation



ventricles hollow chamber that contains cerebrospinal fluid allowing it to move around the brain



insula interprets experiences of pain, disgust, happiness, sadness, taste, and smell



corpus striatum connects the basal ganglia system with the rest of the brain to coordinate functions such as motor control, cognition, learning, and emotions



internal capsule contains fibers that connect the primary sensory areas of the cortex with the rest of the nervous system



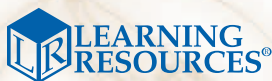
lentiform nucleus part of the basal ganglia composed of the globus pallidus and the putamen, which aids in learning reinforcement

**Look for these related
items from Learning Resources®**

LER 1903 Cross Section Brain Model

LER 3334 Anatomy Model - Heart

LER 3336 Anatomy Model - Human Torso



For a dealer near you, call:
(847) 573-8400 (U.S. & Int'l)
(800) 222-3909 (U.S. & Canada)
+44 (0)1553 762276 (U.K. & Europe)

www.LearningResources.com

CE © Learning Resources, Inc., Vernon Hills, IL (U.S.A.)
Learning Resources Ltd., King's Lynn, Norfolk (U.K.)
Please retain our address for future reference.
Made in China. LRM3335-GUD